

LG-NMT1312U (TOP BEND)

- Three faced light emission, large beam angle, wide lighting area.
- LM80 test proved, up to 80lm/W luminous efficiency.
- Multiple end caps optional, including Gluing end cap, All-wrapped end cap,
- Soldering-free end cap and End cap of no dark area.
- Systematic solution for various installation applications.
- Suitable for sign lighting, decorative lighting, architectural outline lighting, etc.



800lm/M

LUMENS

11W/M

TYPICAL WATT

**3000K
4500K**

COLOUR

IP67

IP RATING

24V

DC

115°

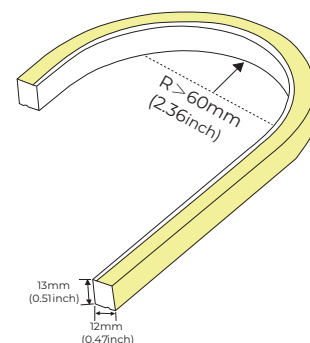
BEAM ANGLE

**3
YEARS**

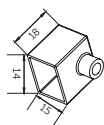
WARRANTY

OPTIONAL

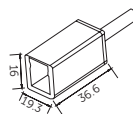
DIMMING



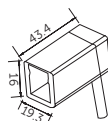
Accessories



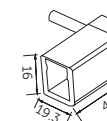
End Cap Set
LG-AS-NMT1312GSO-EC
(L14 x W15 x H18mm)



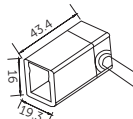
Top Connector
LG-AS-NMT1312HT0-FL
(Wire: 500mm/ IP54)



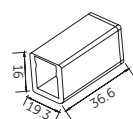
Bottom Connector
LG-AS-NMT1312HB0-FL
(Wire: 500mm/ IP54)



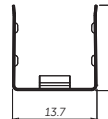
Left Connector
LG-AS-NMT1312HL0-FL
(Wire: 500mm/ IP54)



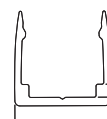
Right Connector
LG-AS-NMT1312HR0-FL
(Wire: 500mm/ IP54)



Quick Connector EC
LG-AS-NMT1312TX0-FL
(IP54)



Moldable Groove
LG-AS-NMT1312M-500
(L500 x W13.7 x H13.54mm)



**Flat PC Carrier / Clip
(On Request)**
LG-AS-NMT1312P-1000/25
(L1000/25 x W15.4 x H14.4mm)

IK08



SALTWATER
RESISTANT



SOLVENT
RESISTANT



UV
RESISTANT



Model	IP Rating	Typical Power (W/M)	Max Power (W/M)	Lumen Output (lm)	CCT	CRI	Beam Angle	Dimming	Cutttable (mm)	Dimensions	Voltage	Bend Radius
LG-NMT1312U	IP67	11W/M	12W/M	800lm/M	3000K 4500K	≥90	115°	Optional	6LED 38.5mm	13x12mm	24V DC	≥60 mm